

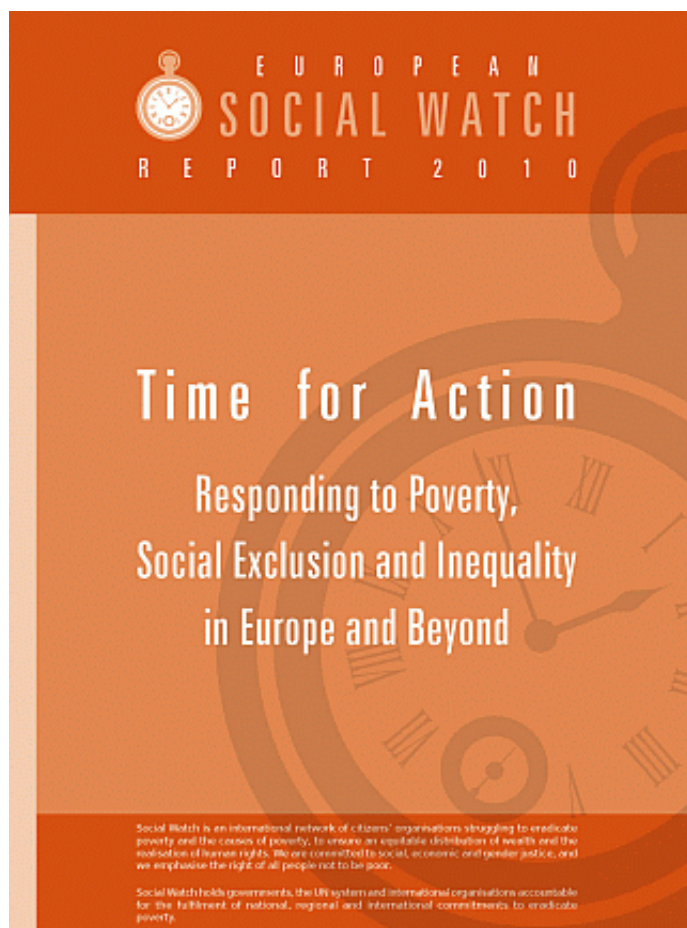
[European Public Health Alliance](#)

putting citizens' health at the heart of Europe

[Accueil du site](#) > [Society](#) > [Health Status](#) > Mapping poverty in the EU : 2010 (...)

Mapping poverty in the EU : 2010 European Social Watch Report released

On 1 February 2011, the European Social Watch Report, 'Time for Action : Responding to Poverty, Social Exclusion and Inequality in Europe and beyond', was published, with an EPHA contribution on 'Access to Health Services in the EU'.



This edition of the European Social Watch report focuses on social exclusion in Europe from different angles, including employment, healthcare, housing and financial exclusion. It also examines the reality of people particularly vulnerable to poverty and social exclusion, such as migrants and Roma.

Special attention is given to the gender dimension of poverty, as well as the age dimension ; the report finds that young people and the elderly are particularly vulnerable to poverty and forms of social exclusion.

In its chapter, EPHA argues that, despite the EU's commitment, access to health is only 'universal' in principle. Inequalities in access to health services prevail in all EU countries and are on the rise. A person's socioeconomic status strongly determines their ability to access health services, placing vulnerable groups in an unequal position. The economic crisis has served to worsen this situation as the health sector has been targeted for cuts in public spending.

In addition, the report covers the national situation in several European countries.

[European Social Watch Report 2010 'Time for Action : Responding to Poverty, Social Exclusion and Inequality in Europe and Beyond'](#)

▶ [EPHA's contribution to the report : 'Access to Health Services in the EU'](#)

EPHA related articles

- ▶ [Council Declaration on the European Year for Combating Poverty and Social Exclusion : Working together to fight poverty in 2010 and beyond.](#)
- ▶ [2010 Citizens' Agora on Crisis and Poverty.](#)
- ▶ [2010 European Year for Combating Poverty and Social Exclusion closing conference.](#)
- ▶ [Communication on Platform Against Poverty and Social Exclusion highlights link between poverty and poor health](#)
- ▶ [Income and living conditions in Europe - One out of four Europeans live below poverty line, are at risk of poverty and social exclusion](#)
- ▶ [Progress on the EU Platform against Poverty and Social Exclusion](#)
- ▶ [EPHA Briefing Paper on Health Inequalities](#)
- ▶ [AGE calls for decent life and respect for human dignity in old age](#)
- ▶ [What role for health care systems in reducing health inequalities ?](#)
- ▶ [Communication on Platform Against Poverty and Social Exclusion highlights link between poverty and poor health](#)

- ▶ [A toolkit on the European Parliament elections produced by the Civil Society Contact Group - now available in 15 languages](#)

Last modified on mars 21 2011.

Other articles you might find interesting

[Health at a Glance : Europe 2010](#)

["Health in the European Union - Trends and analysis"](#)

[New Report on the Status of Health in the European Union : Towards a healthier Europe](#)

[Mass privatisation raised death rate in most post-communist European countries, new research suggests](#)

[Eurofound's annual review of working conditions in the EU 2006-2007](#)

[Prisons : breeding grounds for disease](#)

[What are the leading causes of death in the EU ?](#)

[Quality of Health in Latvia is two times worse than in Europe](#)

Your feedback is valuable to us!

Was this article interesting and relevant for you? Do you have any comments?

[A↑](#)

[A↓](#)

[Members only](#)

Rechercher

Our Newsletter

▶ [Subscribe](#)

▶ [All the issues](#)

[Join Epha](#)

Credits

The European Public Health Alliance runs projects which receive financial support from the [European Commission](#). The views expressed in this website do not necessarily reflect the official views of the EU institutions.



This website is powered by [open source](#) solutions and runs on a [Linux](#) server.

European Public Health Alliance - [Rue de Trèves 49-51 Box 6](#), B-1040 Brussels, Belgium . phone: +32 2 230 3056 - fax: +32 2 233 3880 - epha@epha.org