

# ◎ MEASURING PROGRESS

# The boom and the busted

BCI values for 2011 ranged from 47.9 to 99.5, with Japan in the top position and Chad at the bottom. The global BCI has progressed between 1990 and 2011, although in general there has been a slower rate of progress between 2000 and 2011 than between 1990 and 2000. In the first decade of the XXI century, in fact, the social indicators moved up just 3 points, while world CO<sub>2</sub> emissions moved up to 4.6 tons per capita. World trade and per capita income grew faster in the first decade of the XXI century than the decade before, but progress against poverty slowed down. In spite of the declared commitment with poverty eradication and the Millennium Development Goals, the year 2000 was a turning point for the worse: social progress slowed down while environmental destruction accelerated.

The Basic Capabilities Index (BCI) was designed by social watch as an alternative way to monitor the situation of poverty in the world. Most of the available poverty-measurement is based on the premise that poverty is a monetary phenomenon and they measure, for example, how many persons live with an income of less than one dollar a day. The BCI is an alternative non-monetary measure of poverty and well-being based on key human capabilities that are indispensable for survival and human dignity. The indicators that make up the BCI are among the most basic of those used to measure the millennium development goals (MDGs).

The BCI assigns equal weight to three basic capabilities: (1) the capability to be well-nourished; (2) the capability for healthy and safe reproduction; (3) and the capability to be educated and be knowledgeable. The index is computed as the average of three indicators: 1) mortality among children under five, 2) reproductive or maternal-child health (measured by births attended by skilled health personnel), and 3) education (measured with a combination of enrolment in primary education, the proportion of children reaching fifth grade and adult literacy rate).

All the indicators are expressed in percentages and they range from 0 to 100. Under-five mortality, which is usually expressed in number of deaths per thousand children born alive, is expressed as 100 minus that value. So that, for example, a value of 20 deaths per thousand becomes 2% and, when deducted from 100, yields a basic indicator value of 98. Thus, the theoretical maximum value in infant mortality is 100, which would mean that all children born alive survive until they are five years old. Reproductive health takes the maximum value 100 when all women giving birth are attended by skilled health personnel. Similarly, the education indicator registers 100 when all school age children are enrolled in education and they all attain five years of schooling. These three indicators are then averaged, so the total value of the index will vary between 0% and 100%.

### BCI levels

BCI values for 2011 were computed for 167 countries where data are available out of the 193 member states of the United Nations. The BCI values for 2011 ranged from 47.9 to 99.5 with Japan, along with Norway, the Netherlands, Switzerland and Iceland occupying the top five positions. The top performing countries having the highest BCI are mostly from the developed world of Europe, North America and East

Asia/Pacific. In contrast, the countries with the lowest BCI values are mostly from Sub-Saharan Africa and South Asia, with Chad at the bottom, along with Sierra Leone, Niger, Somalia and Guinea Bissau.

Countries with basic BCI level have reached a reasonable level of human development and have basically met the MDG targets way ahead of the 2015 deadline. Countries with medium BCI level have achieved a certain level of momentum to address key human development concerns and have a fair chance of meeting the MDG targets by 2015. Countries with low BCI level are still struggling to provide basic serv-

ices for their citizens and will more likely miss the MDG targets by 2015. Countries with very low and critical BCI levels will certainly miss the MDG targets. Most of these countries, particularly those with critical BCI level, are experiencing severe economic difficulties, social unrest or wars. Some have just emerged from armed conflict and are still transitioning to normalize Government operations and public services.

The number of countries with medium BCI levels increased from 44 in 1990 to 52 in 2011. Countries that have scaled up their BCI levels from low/very low to medium include the following: Algeria, Iran,

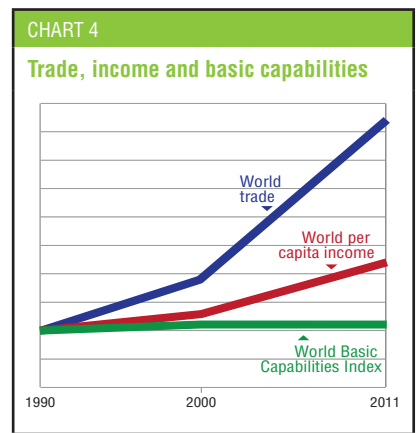
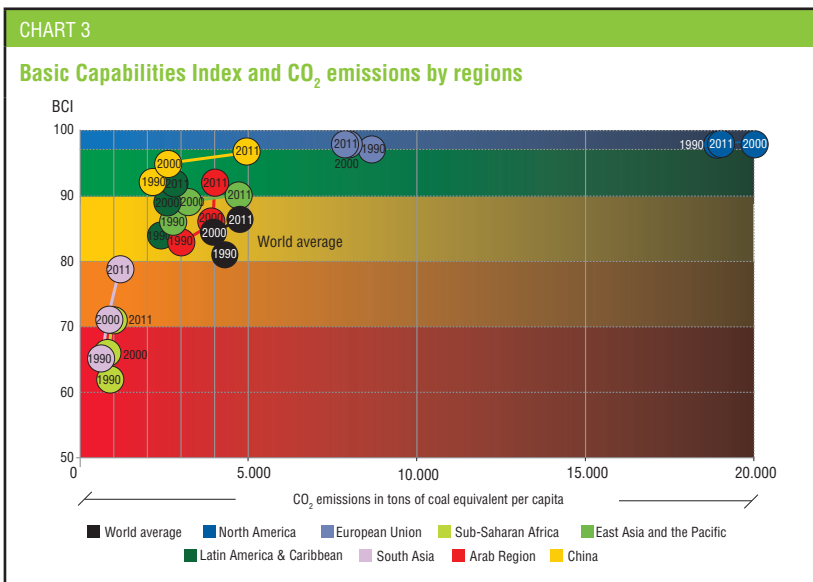
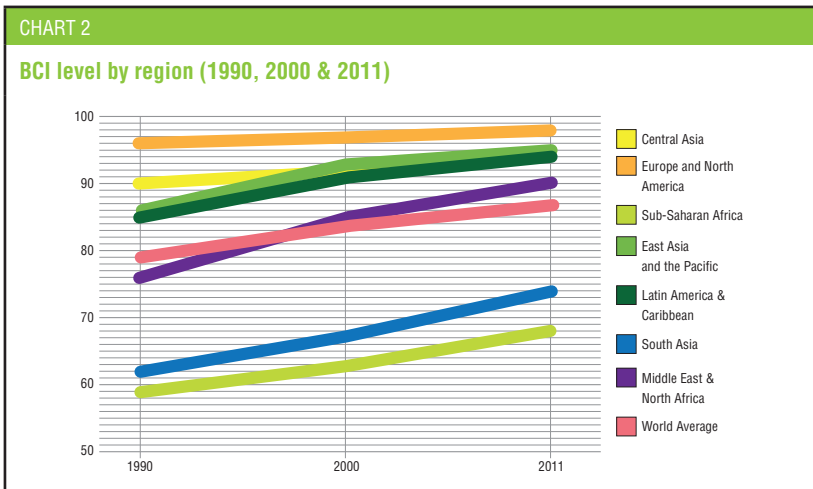
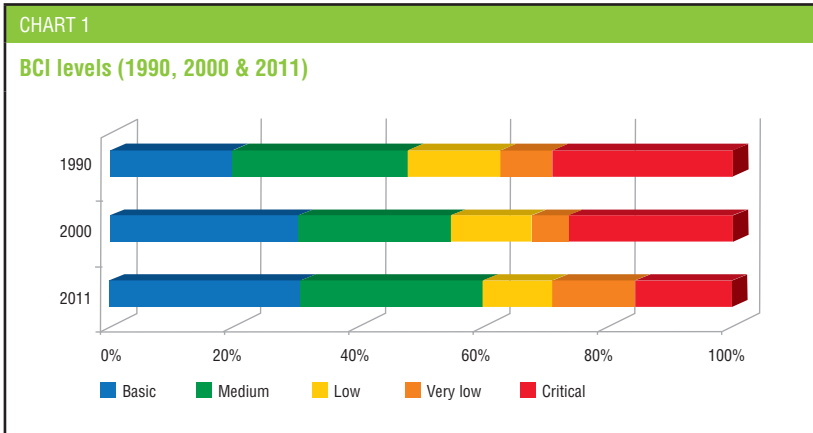
## THE WORLD TURNS RIGHT INSTEAD OF MOVING UP

With carbon dioxide emissions of three tons of per capita a year, Costa Rica and Uruguay have managed to lower their infant mortality to the same level of a country that emits twenty tons a year: the United States. At the same time, with the same level of emissions than Norway, South Africa has a set of social indicators similar to that of Indonesia, which consumes five times less fossil fuels. The notion that eradicating poverty and reaching basic dignity for all requires a model of development that destroys the environment is wrong. The leaders of the world made that point in Rio twenty years ago at the "Earth Summit" and stated that "the major cause of the continued deterioration of the global environment is the unsustainable pattern of consumption and production, particularly in industrialized countries (...) aggravating poverty and imbalances".

Between 1990 and 2000 the world's index of basic capabilities improved five points (from 79 to 84) while the world per capita emissions of CO<sub>2</sub> actually **decreased** from 4.3 tons to 4.1. In the first decade of the XXI century, world CO<sub>2</sub> emissions moved up to 4.6 tons per capita but the social indicators only moved up 3 points (see chart 3). In spite of the declared commitment with poverty eradication and the Millennium Development Goals, the year 2000 was a turning point for the worse: social progress slowed down while environmental destruction accelerated.

## A LOST DECADE IN THE FIGHT AGAINST POVERTY

World trade and per capita income grew faster in the first decade of the XXI century than the decade before, but progress against poverty slowed down. A gap widened, due to the unequal distribution of the benefits of prosperity. Now the boom years seem to give way to a bust. The vulnerable did not benefit from the accelerated growth in the economy, but they will undoubtedly suffer the most with a new contraction. The 2011 Basic Capabilities Index show that economic performance and well being of the people do not go hand in hand (see chart 4). Progress on education, health and nutrition was already too slow when gross income was growing fast. While using the latest available figures, the Index does not capture yet the whole impact of the global financial and economic crisis that started in 2008, because social indicators are gathered and published much slower than the economic numbers. Yet, social watch is receiving evidence from its members on how the crisis is burdening the most those already vulnerable and that situation can only become worse if the big industrialized countries enter into prolonged stagnation or recession.



Kuwait, Saudi Arabia, Syria and Tunisia (Middle East and North Africa); Azerbaijan, Tajikistan, Maldives and Vietnam (Central, South and East Asia); and Belize, Brazil, Colombia, El Salvador, Mexico, Paraguay, Peru and Suriname (Latin America). El Salvador registered the highest increment in BCI in this group accounting for a 17 point increase for the period 1990 to 2011. In contrast, countries such as Ukraine, Bosnia and Herzegovina, and Thailand have moved down from basic BCI to medium level. (See chart 1)

Nineteen countries registered low BCI levels in 2011. Countries such as Bolivia, Honduras and Nicaragua in Latin America, and Cape Verde, Zimbabwe, and Swaziland in the Sub-Saharan Africa region, improved their standing from very low/critical BCI level to low BCI. Within this group of countries that registered low BCI levels, Bhutan in South Asia recorded the highest increase of 28 points, climbing up from critical to low BCI level.

The number of countries in the critical BCI list has declined from 42 in 1990 to only 28 by 2011. Countries such as Benin, Cameroon, Eritrea, Ghana, Kenya, Malawi, Rwanda, Tanzania and Togo in Sub-Saharan Africa; Guatemala in Latin America; Djibouti, Egypt, Morocco and Yemen in the Middle East and North Africa; Laos and Myanmar in East Asia; and Bhutan and India in South Asia, have moved up from their previous critical BCI levels. Nonetheless, the number of countries in the critical list remains substantial especially if one considers that many poor countries with no reliable data collection system, indicating poor functioning institutions, would more likely fall in the critical BCI levels.

The global BCI has progressed between 1990 and 2011, although in general there has been a slower rate of progress between 2000 and 2011 than between 1990 and 2000. In 1990, the average BCI value (population weighted) for countries with available data was 79.4. In 2000, the BCI increased by 4.9 points to 84.3. BCI further increased to 87.1 by 2011, but at a lower increment of 2.8 points – lower than the rate of increase registered in the previous decade. (See chart 2) ■

## TECHNICAL NOTES<sup>1</sup>

The following are the indicators used for computing the Basic Capabilities Index:

- **Under-five mortality rate.** Under-5 mortality rate is defined as the probability of a child born in a specific year or period to die before reaching the age of five, if subject to age-specific mortality rates of that period, that is, a probability of death derived from a life table and expressed as a rate per 1,000 live births (Health statistics and health information systems, World Health Organization, <[www.who.int/healthinfo/statistics/indunder5mortality/en](http://www.who.int/healthinfo/statistics/indunder5mortality/en)>). We express this indicator by subtracting  $x/1000$  from 100, where  $x$  is the number of deaths under-5 per 1000 live births. Data for this indicator were obtained from UNICEF State of the World's Children 2011.
- **Births attended by skilled health personnel.** This is defined as the percentage of live births attended by skilled health personnel in a given period of time. Data for this indicator were mainly obtained from Global Health Observatory Data Repository (World Health Organization), and from the UN official website for MDG indicators and UNdata 2003-2008 (<[data.un.org/Data.aspx?q=births+attended+by+skilled+personnel&d=SOWC&f=inID%3a21](http://data.un.org/Data.aspx?q=births+attended+by+skilled+personnel&d=SOWC&f=inID%3a21)>) was used for countries with no data available from the WHO. Data were imputed for first world countries (such as Germany, Norway, US, etc.) which have no available data from the sources mentioned.
- **Education.** The education indicator consists of three sub-indicators:
  - **Adult literacy rate.** The adult literacy rate is the percentage of population aged 15 and above who can both write

and read a short simple statement on their everyday life. It is calculated by dividing the number of literates (aged 15+) by the corresponding population age group and multiplying the result by 100 (*UNESCO Institute for Statistics Glossary*, <[glossary.uis.unesco.org/glossary/en/home](http://glossary.uis.unesco.org/glossary/en/home)>).

- **Primary Net Enrollment Rate (NER).** This is defined as the enrollment of the official age group expressed as a percentage of the corresponding population, which is calculated by dividing the number of pupils (or students) enrolled who are of the official age group for primary level by the population for the same age group and multiplying the result by 100 (*UNESCO Institute for Statistics Glossary*, <[glossary.uis.unesco.org/glossary/en/home](http://glossary.uis.unesco.org/glossary/en/home)>).
- **Survival rate to fifth grade.** This is the percentage of a cohort of pupils enrolled in the first grade of a given level or cycle of education in a given school year who are expected to reach fifth grade (*UNESCO Institute for Statistics Glossary*, <[glossary.uis.unesco.org/glossary/en/home](http://glossary.uis.unesco.org/glossary/en/home)>).

The main source for these sub-indicators is the UNESCO Institute for Statistics (UIS) data centre, <[stats.uis.unesco.org/unesco/TableViewer/document.aspx?ReportId=136&IF\\_Language=eng&BR\\_Topic=0](http://stats.uis.unesco.org/unesco/TableViewer/document.aspx?ReportId=136&IF_Language=eng&BR_Topic=0)>. The earliest data available from 1990 to 1995 were used for the year 1990, data available from 1998 to 2002 were used for the year 2000, and the latest available data from 2005 to 2011 were used for the year 2011. Data for the year 1990 were mainly gathered from Global Monitoring Report

2010 and World Bank database, since data from UIS were only available from 1999, except for the adult literacy rate indicator. Data not available from UIS and GMR were obtained from the Economic Commission for Latin America and the Caribbean (ECLAC), 2010 Statistical Yearbook for Latin America and the Caribbean in <[www.eclac.org/cgi-bin/getProd.asp?xml=/publicaciones/xml/7/42167/P42167.xml&xsl=/deype/tpl-i/p9f.xsl&base=/tpl-i/top-bottom.xsl](http://www.eclac.org/cgi-bin/getProd.asp?xml=/publicaciones/xml/7/42167/P42167.xml&xsl=/deype/tpl-i/p9f.xsl&base=/tpl-i/top-bottom.xsl)>, accessed on May 2011 and from the United Nations Statistics Division, <[unstats.un.org/unsd/demographic/products/indwm/tab5e.htm](http://unstats.un.org/unsd/demographic/products/indwm/tab5e.htm)> accessed on May 2011. Since there are many missing data for the *Survival rate to fifth grade* indicator, survival rate to the last grade of primary school (also obtained for UIS) was considered for countries with no data.

Data for each sub-indicator were rescaled from 0 to 100 using a formula which was adopted from the Human Development Report (HDR). After rescaling all the values of each sub-indicator, the education indicator is computed by averaging three rescaled sub-indicators, if three have values, or taking the average of two, if one has missing value. No value is given if more than one sub-indicator is absent.

Rescaling was also done for the two other indicators - Under-five mortality rate and Maternal health indicators. The raw BCI value is computed by taking the average of the rescaled values of the three indicators, if all three have values, and the average of two indicators, if only two have values. No value is given if more than one indicator is missing.

The index values expressed from 0 to 100 are then "rescaled back" to put the values back into the original range of BCI values so that comparison with previous BCI calculation becomes possible.

1 The BCI/GEI Technical Group is composed of the research team from Action for Economic Reforms (AER) and Social Watch Philippines (SWP) - Rene Raya, Maria Luz Anigan, Karla Machel Raya and Alvelyn Joy Berdan.

# BASIC CAPABILITIES INDEX 2011

|                          | Surviving under-5 | Birth attended | Children reaching 5th grade | BCI |                    | Surviving under-5 | Birth attended | Children reaching 5th grade | BCI |
|--------------------------|-------------------|----------------|-----------------------------|-----|--------------------|-------------------|----------------|-----------------------------|-----|
| Afghanistan              | 80                |                |                             |     | Egypt, Arab Rep.   | 98                | 79             | 80                          | 90  |
| Albania                  | 99                | 99             | 88                          | 96  | El Salvador        | 98                | 84             | 79                          | 91  |
| Algeria                  | 97                | 95             | 82                          | 92  | Equatorial Guinea  | 86                |                | 53                          | 66  |
| Angola                   | 84                | 49             | 61                          | 67  | Eritrea            | 95                |                | 38                          | 72  |
| Argentina                | 99                | 99             | 96                          | 98  | Estonia            | 99                | 99+            | 96                          | 99  |
| Armenia                  | 98                | 98             | 91                          | 96  | Ethiopia           | 90                | 6              | 33                          | 58  |
| Australia                | 99+               | 99             |                             | 99  | Finland            | 99+               | 99+            | 97                          | 99  |
| Austria                  | 99+               | 99             |                             | 99  | France             | 99+               | 99             |                             | 99  |
| Azerbaijan               | 97                | 89             | 92                          | 93  | Gabon              | 93                | 86             | 76                          | 86  |
| Bahamas, The             | 99                | 99             | 90                          | 97  | Gambia, The        | 90                | 57             | 44                          | 70  |
| Bahrain                  | 99                | 97             | 94                          | 97  | Georgia            | 97                | 98             | 97                          | 97  |
| Bangladesh               | 95                | 18             | 55                          | 70  | Germany            | 99+               | 99+            | 95                          | 99  |
| Belarus                  | 99                | 99+            | 97                          | 98  | Ghana              | 93                | 59             | 61                          | 77  |
| Belgium                  | 99+               | 99+            | 92                          | 98  | Greece             | 99+               | 99             | 97                          | 99  |
| Belize                   | 98                | 95             | 94                          | 96  | Guatemala          | 96                | 51             | 70                          | 80  |
| Benin                    | 88                | 78             | 56                          | 76  | Guinea             | 86                | 46             | 42                          | 64  |
| Bhutan                   | 92                | 72             | 70                          | 81  | GuineaBissau       | 81                | 39             | 32                          | 56  |
| Bolivia                  | 95                | 71             | 84                          | 86  | Guyana             | 97                | 83             | 90                          | 92  |
| Bosnia and Herzegovina   | 99                | 99+            | 89                          | 96  | Haiti              | 91                | 26             |                             | 67  |
| Botswana                 | 94                | 95             | 80                          | 90  | Honduras           | 97                | 67             | 79                          | 86  |
| Brazil                   | 98                | 98             | 89                          | 95  | Hungary            | 99                | 99+            | 94                          | 98  |
| Brunei Darussalam        | 99                | 99+            | 93                          | 98  | Iceland            | 99+               | 99+            | 98                          | 99  |
| Bulgaria                 | 99                | 99+            | 94                          | 98  | India              | 93                | 47             | 62                          | 76  |
| Burkina Faso             | 83                | 54             | 36                          | 62  | Indonesia          | 96                | 73             | 87                          | 88  |
| Burundi                  | 83                | 34             | 69                          | 66  | Iran, Islamic Rep. | 97                | 97             | 89                          | 94  |
| Cambodia                 | 91                | 44             | 64                          | 73  | Iraq               | 96                | 80             | 76                          | 87  |
| Cameroon                 | 85                | 59             | 73                          | 73  | Ireland            | 99+               | 99+            | 97                          | 99  |
| Canada                   | 99                | 99+            |                             | 99  | Israel             | 99+               | 99             | 97                          | 99  |
| Cape Verde               | 97                | 78             | 79                          | 89  | Italy              | 99+               | 99             | 98                          | 99  |
| Central African Republic | 83                | 53             | 38                          | 62  | Jamaica            | 97                | 98             | 76                          | 92  |
| Chad                     | 79                | 21             | 17                          | 48  | Japan              | 99+               | 99+            |                             | 99+ |
| Chile                    | 99                | 99+            | 95                          | 98  | Jordan             | 98                | 99             | 91                          | 96  |
| China                    | 98                | 96             | 97                          | 97  | Kazakhstan         | 97                | 99+            | 95                          | 96  |
| Colombia                 | 98                | 96             | 84                          | 94  | Kenya              | 92                | 44             | 78                          | 77  |
| Comoros                  | 90                | 62             | 73                          | 78  | Kiribati           | 95                | 65             |                             | 84  |
| Congo, Dem. Rep.         | 80                | 74             | 40                          | 64  | Korea, Dem. Rep.   | 97                | 97             |                             | 95  |
| Congo, Rep.              | 87                | 86             | 51                          | 75  | Korea, Rep.        | 99+               | 99+            | 98                          | 99  |
| Costa Rica               | 99                | 99             | 92                          | 97  | Kuwait             | 99                | 99+            | 89                          | 97  |
| Cote d'Ivoire            | 88                | 57             | 40                          | 68  | Kyrgyz Republic    | 96                | 98             | 90                          | 94  |
| Croatia                  | 99+               | 99+            | 94                          | 98  | Lao PDR            | 94                | 20             | 61                          | 71  |
| Cuba                     | 99                | 99+            | 97                          | 99  | Latvia             | 99                | 99+            | 97                          | 99  |
| Cyprus                   | 99+               | 99+            | 96                          | 99  | Lebanon            | 99                | 98             | 88                          | 96  |
| Czech Republic           | 99+               | 99+            | 91                          | 98  | Lesotho            | 92                | 62             | 62                          | 77  |
| Denmark                  | 99+               | 99+            | 96                          | 99  | Liberia            | 89                | 46             | 47                          | 68  |
| Djibouti                 | 91                | 93             | 30                          | 75  | Libya              | 98                | 99+            |                             | 97  |
| Dominica                 | 99                | 99+            | 87                          | 96  | Lithuania          | 99                | 99+            | 95                          | 98  |
| Dominican Republic       | 97                | 98             | 71                          | 90  | Luxembourg         | 99+               | 99+            | 94                          | 98  |
| Ecuador                  | 98                | 80             | 82                          | 90  | Madagascar         | 94                | 44             | 59                          | 75  |

|                    | Surviving under-5 | Birth attended | Children reaching 5th grade | BCI |                      | Surviving under-5 | Birth attended | Children reaching 5th grade | BCI |
|--------------------|-------------------|----------------|-----------------------------|-----|----------------------|-------------------|----------------|-----------------------------|-----|
| Malawi             | 89                | 54             | 57                          | 72  | Senegal              | 91                | 52             | 44                          | 70  |
| Malaysia           | 99                | 99+            | 92                          | 98  | Serbia               | 99                | 99             | 95                          | 98  |
| Maldives           | 99                | 95             | 94                          | 97  | Sierra Leone         | 81                | 42             |                             | 58  |
| Mali               | 81                | 49             | 46                          | 61  | Singapore            | 99+               | 99+            | 96                          | 99  |
| Malta              | 99                | 99+            | 88                          | 97  | Slovak Republic      | 99                | 98             |                             | 98  |
| Mauritania         | 88                | 61             | 42                          | 69  | Slovenia             | 99+               | 99+            | 98                          | 99  |
| Mauritius          | 98                | 99+            | 90                          | 96  | Somalia              | 82                | 33             |                             | 57  |
| Mexico             | 98                | 94             | 93                          | 96  | South Africa         | 94                | 91             | 81                          | 89  |
| Moldova            | 98                | 99+            | 90                          | 96  | Spain                | 99+               | 99             | 99                          | 99  |
| Mongolia           | 97                | 99+            | 91                          | 96  | Sri Lanka            | 99                | 99             | 87                          | 96  |
| Montenegro         | 99                | 99             |                             | 98  | Sudan                | 89                | 49             | 49                          | 69  |
| Morocco            | 96                | 63             | 67                          | 82  | Suriname             | 97                | 90             | 80                          | 91  |
| Mozambique         | 86                | 55             | 51                          | 68  | Swaziland            | 93                | 74             | 75                          | 83  |
| Myanmar            | 93                | 37             | 70                          | 75  | Sweden               | 99+               | 99+            | 96                          | 99  |
| Namibia            | 95                | 81             | 85                          | 89  | Switzerland          | 99+               | 99+            |                             | 99  |
| Nepal              | 95                | 19             | 46                          | 68  | Syrian Arab Republic | 98                | 95             | 87                          | 95  |
| Netherlands        | 99+               | 99+            | 99                          | 99  | Tajikistan           | 94                | 88             | 98                          | 92  |
| New Zealand        | 99                | 99+            |                             | 99  | Tanzania             | 89                | 51             | 76                          | 76  |
| Nicaragua          | 97                | 74             | 60                          | 84  | Thailand             | 99                | 99             | 88                          | 96  |
| Niger              | 84                | 33             | 28                          | 57  | Togo                 | 90                | 62             | 68                          | 77  |
| Nigeria            | 86                | 39             | 45                          | 64  | Trinidad and Tobago  | 97                | 98             | 94                          | 95  |
| Norway             | 99+               | 99+            | 98                          | 99  | Tunisia              | 98                | 95             | 87                          | 94  |
| Oman               | 99                | 99+            | 83                          | 95  | Turkey               | 98                | 91             | 89                          | 94  |
| Pakistan           | 91                | 39             | 41                          | 68  | Turkmenistan         | 96                | 99+            |                             | 94  |
| Panama             | 98                | 89             | 90                          | 94  | Uganda               | 87                | 42             | 62                          | 69  |
| Papua New Guinea   | 93                | 53             |                             | 77  | Ukraine              | 99                | 99             | 93                          | 97  |
| Paraguay           | 98                | 97             | 83                          | 94  | United Arab Emirates | 99                | 99+            | 89                          | 97  |
| Peru               | 98                | 83             | 86                          | 92  | United Kingdom       | 99                | 99+            |                             | 99  |
| Philippines        | 97                | 62             | 81                          | 86  | United States        | 99                | 99             |                             | 99  |
| Poland             | 99                | 99             | 96                          | 98  | Uruguay              | 99                | 99             | 96                          | 98  |
| Portugal           | 99+               | 99+            | 95                          | 99  | Uzbekistan           | 96                | 99+            | 93                          | 95  |
| Qatar              | 99                | 99+            | 91                          | 97  | Venezuela, RB        | 98                | 95             | 91                          | 95  |
| Romania            | 99                | 99             | 91                          | 97  | Vietnam              | 98                | 88             | 89                          | 93  |
| Russian Federation | 99                | 99+            | 96                          | 98  | Yemen, Rep.          | 93                | 36             | 53                          | 72  |
| Rwanda             | 89                | 52             | 57                          | 71  | Zambia               | 86                | 46             | 67                          | 70  |
| Saudi Arabia       | 98                | 99+            | 85                          | 95  | Zimbabwe             | 91                | 60             | 87                          | 82  |

99+ refers to a value above 99.5. It is not rounded up to "100" as that would imply a perfect accomplishment which is impossible to achieve in reality.

# GENDER EQUITY INDEX 2012

|                           | Education | Economic Activity | Empowerment | GEI |                   | Education | Economic Activity | Empowerment | GEI |
|---------------------------|-----------|-------------------|-------------|-----|-------------------|-----------|-------------------|-------------|-----|
| Afghanistan               | 4         | 17                | 25          | 15  | Egypt             | 83        | 29                | 22          | 45  |
| Albania                   | 94        | 57                | 13          | 55  | El Salvador       | 98        | 55                | 34          | 62  |
| Algeria                   | 86        | 44                | 16          | 49  | Equatorial Guinea | 92        | 28                | 7           | 42  |
| Angola                    | 70        | 73                | 50          | 64  | Eritrea           | 45        | 58                | 30          | 44  |
| Argentina                 | 100       | 68                | 53          | 74  | Estonia           | 99        | 80                | 52          | 77  |
| Armenia                   | 100       | 74                | 36          | 70  | Ethiopia          | 37        | 71                | 25          | 44  |
| Australia                 | 100       | 83                | 57          | 80  | Finland           | 100       | 87                | 76          | 88  |
| Austria                   | 100       | 68                | 54          | 74  | France            | 100       | 79                | 51          | 77  |
| Azerbaijan                | 98        | 64                | 32          | 64  | Gabon             | 92        | 67                | 23          | 61  |
| Bahamas*                  | 100       | 0                 | 34          | 0   | Gambia            | 79        | 71                | 26          | 59  |
| Bahrain                   | 97        | 35                | 30          | 54  | Georgia           | 98        | 63                | 39          | 67  |
| Bangladesh                | 81        | 65                | 18          | 55  | Germany           | 100       | 78                | 62          | 80  |
| Belarus                   | 100       | 71                | 22          | 64  | Ghana             | 79        | 88                | 19          | 62  |
| Belgium                   | 98        | 79                | 61          | 79  | Greece            | 99        | 68                | 49          | 72  |
| Belize                    | 100       | 62                | 46          | 69  | Guatemala         | 89        | 50                | 6           | 49  |
| Benin                     | 43        | 66                | 14          | 41  | Guinea*           | 34        | 78                | 0           | 0   |
| Bhutan                    | 72        | 41                | 9           | 41  | Guinea-Bissau     | 57        | 52                | 20          | 43  |
| Bolivia                   | 92        | 64                | 43          | 66  | Guyana            | 98        | 39                | 57          | 64  |
| Bosnia and Herzegovina    | 98        | 68                | 9           | 58  | Haiti             | 84        | 45                | 16          | 48  |
| Botswana                  | 100       | 78                | 41          | 73  | Honduras          | 100       | 52                | 39          | 63  |
| Brazil                    | 98        | 75                | 43          | 72  | Hungary           | 98        | 82                | 40          | 73  |
| Brunei Darussalam         | 99        | 78                | 39          | 72  | Iceland           | 100       | 82                | 80          | 87  |
| Bulgaria                  | 99        | 81                | 47          | 76  | India             | 66        | 33                | 12          | 37  |
| Burkina Faso              | 48        | 75                | 20          | 48  | Indonesia         | 93        | 57                | 36          | 62  |
| Burundi                   | 69        | 91                | 47          | 69  | Iran              | 95        | 42                | 16          | 51  |
| Cambodia                  | 71        | 73                | 21          | 55  | Iraq*             | 61        | 0                 | 23          | 0   |
| Cameroon                  | 65        | 44                | 15          | 41  | Ireland           | 100       | 74                | 48          | 74  |
| Canada                    | 100       | 83                | 57          | 80  | Israel            | 100       | 81                | 44          | 75  |
| Cape Verde                | 91        | 62                | 62          | 72  | Italy             | 99        | 66                | 45          | 70  |
| Central African Republic* | 26        | 69                | 0           | 0   | Jamaica           | 97        | 75                | 16          | 63  |
| Chad                      | 13        | 52                | 12          | 25  | Japan             | 93        | 65                | 14          | 57  |
| Chile                     | 99        | 60                | 56          | 72  | Jordan            | 97        | 39                | 11          | 49  |
| China                     | 95        | 76                | 21          | 64  | Kazakhstan        | 99        | 82                | 44          | 75  |
| Colombia                  | 99        | 71                | 21          | 64  | Kenya             | 86        | 75                | 14          | 58  |
| Comoros                   | 74        | 70                | 1           | 48  | Kiribati          | 96        | 0                 | 6           | 0   |
| Congo, DR                 | 40        | 55                | 12          | 36  | Korea, DPR        | 0         | 0                 | 0           | 0   |
| Congo, Rep.               | 34        | 40                | 12          | 29  | Korea, Rep.       | 84        | 68                | 26          | 59  |
| Costa Rica                | 100       | 61                | 60          | 74  | Kuwait            | 97        | 57                | 33          | 62  |
| Côte d'Ivoire             | 42        | 41                | 12          | 32  | Kyrgyzstan        | 99        | 71                | 48          | 73  |
| Croatia                   | 99        | 79                | 44          | 74  | Lao, PDR          | 75        | 69                | 23          | 56  |
| Cuba                      | 100       | 48                | 56          | 68  | Latvia            | 100       | 81                | 51          | 77  |
| Cyprus                    | 95        | 76                | 32          | 68  | Lebanon           | 95        | 42                | 28          | 55  |
| Czech Republic            | 100       | 74                | 46          | 73  | Lesotho           | 100       | 83                | 34          | 72  |
| Denmark                   | 100       | 87                | 66          | 84  | Liberia           | 86        | 52                | 29          | 56  |
| Djibouti                  | 59        | 64                | 14          | 46  | Libya*            | 0         | 0                 | 0           | 0   |
| Dominica*                 | 100       | 0                 | 60          | 0   | Lithuania         | 98        | 83                | 48          | 77  |
| Dominican Republic        | 100       | 71                | 44          | 72  | Luxembourg        | 100       | 75                | 30          | 68  |
| Ecuador                   | 97        | 57                | 58          | 71  | Madagascar        | 94        | 84                | 33          | 70  |

|                    | Education | Economic Activity | Empowerment | GEI |                          | Education | Economic Activity | Empowerment | GEI |
|--------------------|-----------|-------------------|-------------|-----|--------------------------|-----------|-------------------|-------------|-----|
| Malawi             | 89        | 57                | 32          | 59  | Senegal                  | 63        | 57                | 28          | 50  |
| Malaysia           | 98        | 40                | 31          | 56  | Serbia                   | 98        | 75                | 51          | 75  |
| Maldives           | 97        | 60                | 31          | 63  | Sierra Leone             | 33        | 87                | 11          | 44  |
| Mali               | 35        | 42                | 19          | 32  | Singapore                | 94        | 71                | 40          | 69  |
| Malta              | 100       | 58                | 31          | 63  | Slovakia                 | 100       | 75                | 43          | 73  |
| Mauritania         | 69        | 61                | 28          | 53  | Slovenia                 | 100       | 79                | 47          | 75  |
| Mauritius          | 98        | 59                | 42          | 67  | Somalia*                 | 0         | 0                 | 0           | 0   |
| Mexico             | 98        | 56                | 37          | 64  | South Africa             | 98        | 74                | 66          | 79  |
| Moldova            | 98        | 87                | 45          | 77  | Spain                    | 99        | 71                | 73          | 81  |
| Mongolia           | 99        | 94                | 50          | 81  | Sri Lanka                | 97        | 58                | 31          | 62  |
| Montenegro*        | 0         | 0                 | 0           | 0   | Sudan                    | 76        | 25                | 20          | 40  |
| Morocco            | 72        | 29                | 19          | 40  | Suriname*                | 98        | 62                |             | 0   |
| Mozambique         | 59        | 68                | 48          | 58  | Swaziland                | 93        | 73                | 31          | 65  |
| Myanmar*           | 97        | 65                | 0           | 0   | Sweden                   | 99        | 85                | 77          | 87  |
| Namibia            | 100       | 76                | 54          | 77  | Switzerland              | 98        | 80                | 58          | 79  |
| Nepal              | 65        | 56                | 21          | 47  | Syria                    | 89        | 38                | 24          | 50  |
| Netherlands        | 100       | 82                | 56          | 79  | Tajikistan               | 74        | 67                | 13          | 51  |
| New Zealand        | 100       | 83                | 63          | 82  | Tanzania                 | 71        | 68                | 42          | 60  |
| Nicaragua          | 100       | 58                | 64          | 74  | Thailand                 | 97        | 77                | 39          | 71  |
| Niger              | 21        | 38                | 18          | 26  | Togo                     | 53        | 54                | 14          | 40  |
| Nigeria*           | 60        | 38                | 0           | 0   | Trinidad and Tobago      | 99        | 72                | 64          | 78  |
| Norway             | 100       | 90                | 78          | 89  | Tunisia*                 | 93        | 18                | 0           | 0   |
| Oman               | 94        | 13                | 27          | 45  | Turkey                   | 83        | 34                | 19          | 45  |
| Pakistan           | 55        | 19                | 14          | 29  | Turkmenistan             | 100       | 73                | 13          | 62  |
| Panama             | 99        | 69                | 60          | 76  | Uganda                   | 82        | 59                | 48          | 63  |
| Papua New Guinea   | 89        | 88                | 2           | 60  | Ukraine                  | 100       | 67                | 41          | 69  |
| Paraguay           | 99        | 70                | 49          | 73  | United Arab Emirates     | 98        | 49                | 43          | 63  |
| Peru               | 96        | 69                | 43          | 69  | United Kingdom           | 100       | 81                | 47          | 76  |
| Philippines        | 100       | 67                | 61          | 76  | United States of America | 100       | 69                | 47          | 72  |
| Poland             | 100       | 75                | 52          | 76  | Uruguay                  | 100       | 72                | 51          | 74  |
| Portugal           | 99        | 78                | 55          | 77  | Uzbekistan               | 87        | 71                | 13          | 57  |
| Qatar              | 98        | 53                | 30          | 60  | Venezuela                | 100       | 65                | 28          | 64  |
| Romania            | 99        | 80                | 39          | 72  | Viet Nam                 | 95        | 75                | 41          | 70  |
| Russian Federation | 100       | 81                | 44          | 75  | Yemen                    | 30        | 40                | 2           | 24  |
| Rwanda             | 84        | 72                | 74          | 77  | Zambia                   | 78        | 49                | 18          | 49  |
| Saudi Arabia       | 93        | 4                 | 15          | 37  | Zimbabwe                 | 88        | 57                | 21          | 55  |

\* There are no available data on GEI.



## SOCIAL AND ECONOMIC RIGHTS FULFILLMENT INDEX (SERF)

# A new Human Rights approach

Countries have a duty to progressively realize economic and social rights to the maximum of available resources. This means that assessing the extent of each State's obligation requires specifying what is reasonably feasible to achieve using best policy and technological practices. Measuring economic and social rights fulfillment requires considering the perspectives of both the rights-holding individual and the duty-bearing government. The composite SERF Index does this and is comprised of separate scores for each economic and social right considered, and estimates obligations for progressive realization by using an innovative approach that maps an 'achievement possibilities frontier'.

Although other human rights indices exist, almost all focus on civil and political rights, while the new Social and Economic Rights Fulfillment Index (SERF Index) provides a means of determining the extent to which countries are meeting their obligations to fulfil five of the substantive human rights enumerated in The International Covenant of Economic, Social, and Cultural Rights (ICESCR): the right to food, the right to adequate shelter, the right to healthcare, the right to education, and the right to decent work<sup>1</sup>. What makes the SERF Index methodology unique is the construction of Achievement Possibilities Frontiers (APFs) which specify each country's level of obligation for *progressive realization* with regard to the various aspects of each economic and social right considered.

Moreover, many human rights and governance measures rely on subjective information, using expert opinion to rate conditions in countries. This raises issues about who is making these judgements, what criteria are used, who is publishing the indices for what purpose, and local advocacy groups replicating the measures. Aware of these pitfalls, the SERF Index uses survey based quantitative data series, published by international agencies that assure comparability across countries and that is readily accessible through the internet.

### The SERF Methodology<sup>2</sup>

States bear the primary responsibility for the realization of the rights of citizens and individuals residing within their borders. States have a three-fold responsibility – to protect, respect, and fulfill rights – and with respect to each, obligations for conduct

1 United Nations (1966) International Covenant on Economic, Social and Cultural Rights (ICESCR). Adopted 16 Dec. 1966, General Assembly Res. 2200 (XXI), U.N. GAOR, 21<sup>st</sup> Sess., Supp. No. 16, U.N. Doc. A/6316 (1966), 993 U.N.T.S. 3 (entered into force 3 Jan. 1976).

2 A full discussion of the SERF Index and the methodology underlying its construction can be found in the following papers all available from the Economic and Social Rights Empowerment Initiative's website, <www.serfindex.org> Fukuda-Parr, Lawson-Remer, and Randolph, "An Index of Economic and Social Rights fulfillment: Concept and Methodology", *Journal of Human Rights*, 8: 195-221, (2009); Randolph, Fukuda-Parr, and Lawson-Remer, "Economic and Social Rights Fulfillment Index: Country Scores and Rankings," *Journal of Human Rights*, 9: 230-61, (2010); and Fukuda-Parr, Lawson-Remer, and Randolph, *SERF Index Methodology Version 2011.1: Technical Note*.

| TABLE 1                   |  |  |
|---------------------------|--|--|
| Indicators of Core Rights |  |  |
| Social/ Economic Right    | Core SERF Index  | High-Income OECD SERF Index  |
| Right to Food             | % Children under 5 not stunted   | % infants without low birth weight   |
| Right to Education        | Primary School Completion Rates<br>Combined Gross School Enrollment Rates                                  | Combined Gross School Enrollment Rates<br>Average Math and Science PISA scores |
| Right to Health           | Under 5 Survival rate (%)<br>Age 65 Survival rate<br>Contraception Use rate                                | Under 5 Survival rate<br>Age 65 Survival rate                                  |
| Right to Adequate Housing | % Rural Population with Access to Improved Water Source<br>% Population with Access to Improved Sanitation | Data Not Available   |
| Right to Decent Work      | % with income >\$2 (2005 PPP\$) per day  | % with Income > 50% median income<br>% Unemployed not Long Term Unemployed     |
| Right to Social Security  | Data Not Available   | Data Not Available   |

as well as obligations of result. Composite SERF Index scores are comprised of separate scores on each economic and social right considered. The SERF methodology draws on international law – in addition to the ICESCR, the Universal Declaration of Human Rights (UDHR), the General Comments of the Committee on Economic, Social and Cultural Rights (CESCR), reports of Special Rapporteurs, and reports of relevant task forces, seminars, and working groups, to define relevant aspects of substantive economic and social rights guaranteed under the ICESCR as well as the obligations of State Parties to the Covenant. When considering any given aspect of an economic or social right, two pieces of information are compared: 1) the level of achievement on a socio-economic indicator reflecting fulfillment of the aspect of the socio-economic right concerned, and 2) the level of achievement feasible on the socio-economic indicator concerned given the country's resource capacity.

### Standard Socio-Economic Indicators Measure the Extent of Rights Enjoyment

The General Comments of the CESCR single out six substantive rights – food, adequate shelter, healthcare, education, decent work and social security – and expand on the relevant aspects of each right. The selection of indicators of rights enjoyment for the SERF Index involved translating the narrative of the legal documents into specific aspects of rights,

the enjoyment of which can be quantitatively measured using socio-economic indicators. A number of criteria governed the selection of indicators used to construct the SERF Index, beyond making sure the indicators adequately reflected the right aspect of concern. First, selected indicators had to be based on reliable data, measured with objective methods, legitimately comparable over time and across countries, and publicly accessible. Second, indicators were selected to reflect the current challenges to fulfillment of a given right for the context at hand and not to encompass all aspects of each right. Bellwether indicators sensitive to a variety of relevant challenges were prioritized over multiple distinct indicators of each relevant aspect of a right. Further, emphasis was placed on selecting indicators that discriminate well between degrees of enjoyment in the context at hand. Some of the indicators relevant to high income OECD countries differ from those relevant to developing countries. For example, an indicator of the quality of education is much more relevant to high income OECD countries than an indicator of the proportion of children attending or completing primary school. Further, the latter does not discriminate between levels of enjoyment of the right to education in high income OECD countries. As a result, the SERF Index is actually a pair of indices, the Core SERF Index covering most countries, and a supplementary index, the SERF Index for High Income OECD Countries.

### Achievement Possibility Frontiers (APFs): Identifying the Level of State Obligations

The ICESCR commits governments to achieve realization of economic, social and cultural rights progressively. As stated in Article 2.1:

Each State Party to the present Covenant undertakes to take steps, individually and through international assistance and co-operation, especially economic and technical, to the maximum of its available resources, with a view to achieving progressively the full realization of the rights recognized in the present Covenant, by all appropriate means including particularly the adoption of legislative measures.

The “progressive realization” provision recognizes that States have very different starting points in their ability to achieve full enjoyment of economic and social rights. Inherent in the idea of progressive realization is that a government’s ability to achieve realization of rights depends on the level of resources (financial and other) available in the country. The enjoyment of the right to highest attainable standard of health, for example, cannot be achieved overnight, as facilities need to be built, personnel trained, and policy incentives for business and households put in place and so on, so that people have access to healthcare. These arrangements require financial resources which may be beyond what governments and households can mobilize.

Consequently, the human rights performance of States cannot be judged on the basis of outcomes – enjoyment of rights by people – alone. For example, the performance of the United States and Malawi cannot be compared on the basis of their respective levels of maternal mortality considering the hugely different levels of capacity in these two countries. A country’s performance in fulfilling obligations for economic and social rights depends on both: (a) the actual ESR outcomes people enjoy, as indicated by socio-economic statistics that proxy for particular rights; and (b) a society’s capacity for fulfillment, as determined by the amount of economic resources available overall to the duty-bearing State.

A State’s level of obligation depends on its resource capacity and this implies that assessing the extent of each State’s obligation requires specifying what is reasonably feasible to achieve using best policy and technological practices in the face of its resource constraints. This is not a straightforward task. Specifically, how does one determine whether a country has committed “the maximum of [a country’s] available resources” to fulfilling economic and social rights? As Audrey Chapman notes, it: “necessitates the development of a multiplicity of performance standards for each right in relationship to the varied ... contexts of countries”<sup>3</sup>.

Achievement Possibility Frontiers benchmark each country’s level of obligation at a given time for each right aspect considered. Achievement Possibili-

ties Frontiers (APFs) were specified by first constructing a scatter plot of achievement on a given indicator against per capita GDP (measured in constant purchasing power parity dollars, PPP\$), our indicator of available resources, using data from all countries over the 1990 to 2008 period. Frontier observations were then identified from the scatter and statistical techniques were used to fit a curve to the boundary observations. The resultant APF shows the level of achievement on an indicator that is feasible using best practices at each per capita GDP level, our indicator of resource capacity. It could be argued that states with larger budgets, more revenue, or better institutions have a greater capacity to fulfill economic and social rights than those with the same per capita income, but smaller budgets or poorer institutions. However, a State’s capacity depends on the choices it makes with regard to its taxing policies and institutional structure. The obligation to progressively realize economic and social rights requires states to collect and expend resources at the level necessary to meet their economic and social rights obligations. It is therefore appropriate to measure resource capacity as reflected by the total resources available to the state, not the portion of those resources the state chooses to tap. The use of data from a recent, but relatively long period allows us to trace out a frontier that is stable over the medium term facilitating comparisons over time.<sup>4</sup>

For example, Box 1 shows the APF for the child survival rate, one element of our right to health index. Each black dot is the child survival rate (100% - the % under 5 mortality rate) in a particular country at a particular year. The APF for the child survival rate rises with per capita income until the per capita income level reaches \$6,350 (2005 PPP\$) and then remains constant (plateaus) indicating that using best practices, it is possible to fully ensure this aspect of the right to health once a country’s per capita income level reaches \$6,350. The shape of the frontier for per capita income levels below \$6,350 shows the rate at which it is feasible to transform resources into further improvement in the child survival rate. The APFs for different aspects of rights have different shapes and plateau at different per capita income levels indicating that it is easier to transform resources into some aspects of rights enjoyment than others and feasible to fulfill some aspects of some rights at a lower per capita income level than others. **A country’s level of obligation at a given time with regard to any given aspect of a right is then specified as the frontier value of the APF at that country’s per capita GDP level.**

### Assessing the Extent to which Countries Meet their Obligations of Result

A striking feature of each of the frontier plots is the large difference in rights enjoyment levels among countries with similar per capita GDP levels. For ex-

ample, as the frontier plot for the child survival rate shows, child survival rates range from around 75% to 98% for countries with per capita income levels of \$2000 (2005 PPP\$). The range is surprisingly high, even in countries with per capita income levels of \$10,000 – from about 80% to nearly 100% – even though this is well beyond the per capita income level necessary to fully realize this aspect of the right to health. These differences are indicative of differences in the extent to which countries meet their commitments to fulfill a particular right aspect.

A performance indicator score for a given right aspect is calculated as the percentage of the frontier value of the indicator achieved. So, for example, if the country achieves a child survival rate of 72%, but the frontier value of the indicator at the country’s per capita GDP level is 90%, then the country’s performance indicator score with regard to the child survival rate is 80%, indicating the country is only achieving 80% of the level feasible given its resources.<sup>5</sup> In the case that a country has more than enough income to ensure full enjoyment of the right aspect but fails to do so, their performance indicator score incorporates a penalty – the penalty is greater, and hence their performance indicator score reduced more, the lower is their achievement and the greater is the ratio of their per capita income to the per capita income level needed to ensure full enjoyment of the right aspect.<sup>6</sup>

A Right Index is constructed for each of the substantive economic and social rights and the SERF Index aggregates the component Right Indices. The Component Right Indices are constructed as the simple average of the performance indicator scores relevant to each right. The Core Right to Education Index, for example, is the average of the adjusted performance indicator scores for the primary school completion rate and the combined school enrollment rate. In those cases where a single indicator is used to measure performance on a substantive right, the substantive right index is simply the performance indicator score on the corresponding indicator. The Core right to Food Index, for example, is the adjusted performance indicator score for the percentage of children that are not stunted (low height for age). The SERF Index itself is constructed as the average of the Component Right Indices.<sup>7</sup>

5 The practical range of indicators differs. For example, the lowest child survival rate observed in any country since 1990 is 68%, while the lowest Age 65 survival rate observed is 20%. As a result, indicators are rescaled to reflect their practical range before computing the performance indicator scores. See *SERF Index Methodology Version 2011.1 Technical Note* at <[www.serfindex.org/data](http://www.serfindex.org/data)> for more details.

6 The penalty formula was specified on the basis of a set of axioms defining the characteristics one would like to have in such a penalty (see Fukuda-Parr, Lawson-Remer, and Randolph, “An Index of Economic and Social Rights fulfillment: Concept and Methodology”, *Journal of Human Rights*, 8: 195-221, 2009) and subjected to review in multiple seminars and workshops. The final penalty formula adopted is elaborated in “SERF Index Methodology Version 2011.1 Technical Note available at <[www.serfindex.org/data](http://www.serfindex.org/data)>.

7 Alternative weighting schemes can be employed that place more weight on those rights where a country’s performance falls shortest.

3 Chapman, Audrey, “The Status of Efforts to Monitor Economic, Social and Cultural Rights,” Chapter 7, in *Economic Rights: Conceptual, Measurement and Policy Issues* Shareen Hertel and Lance Minkler (eds.), (Cambridge: Cambridge University Press, 2007). pp. 143-164

4 A potential concern was that knowledge of the kinds of policies and technologies that promote aspects of rights enjoyment change rapidly so that the frontier would be defined by the most current observations. However, this turned out not to be the case; the frontier observations are reasonably balanced over time implying that the assumption that the APFs are stable over the medium term is reasonable.

### Country Performance on the SERF Index<sup>8</sup>

The Core SERF Index can be calculated for 99 countries and the Supplementary SERF Index for High Income OECD Countries can be calculated for an additional 24 countries. The Component Right Indices can be calculated for a significantly larger number of countries. In the case of the Core SERF Index, the Right to Food, Education, Health, Housing, and Work Indices can be calculated for 123, 145, 131, 144, and 118 countries, respectively. With regard to the Supplementary Index it can be calculated for 28, 27, 28, and 25 countries in the case of the Right to Food, Education, Health, and Work Indices, respectively.

The extent to which countries honor their commitments to fulfill economic and social rights obligations varies widely. None of the countries for which either the Core or Supplementary SERF Index can be calculated succeeds in fully meeting its commitments with regard to all economic and social rights simultaneously. The best performing core country, Uruguay, achieves a score of just over 94% on the SERF Index while the best performing OECD country, Finland, achieves a score just shy of 95%. Although a number of countries fully meet their commitments with regard to specific economic and social rights, other countries fall far short of meeting any of their commitment with regard to each of the five economic and social rights. Equatorial Guinea scores 20% on the SERF Index and its scores on the component right indices range from just above 3% to just under 29%. The mean score on the Core SERF Index is just shy of 72%; it is substantially higher, just under 90%, on the Supplementary Index for high income OECD countries. There is variation in the mean score across the different component right indices. For core countries, the range is 71% to 79% for the right to food and the right to education, respectively. For high income OECD countries, the range is larger—62% to nearly 98% for the right to work and education, respectively. What is clear is that there is considerable room for improvement for most countries. The Economic and Social Rights Empowerment Initiative's website, [www.serfindex.org/data](http://www.serfindex.org/data), provides downloadable spread sheets showing each country's performance on the SERF and component right indices.

### Shedding light on important policy questions: virtuous and vicious cycles

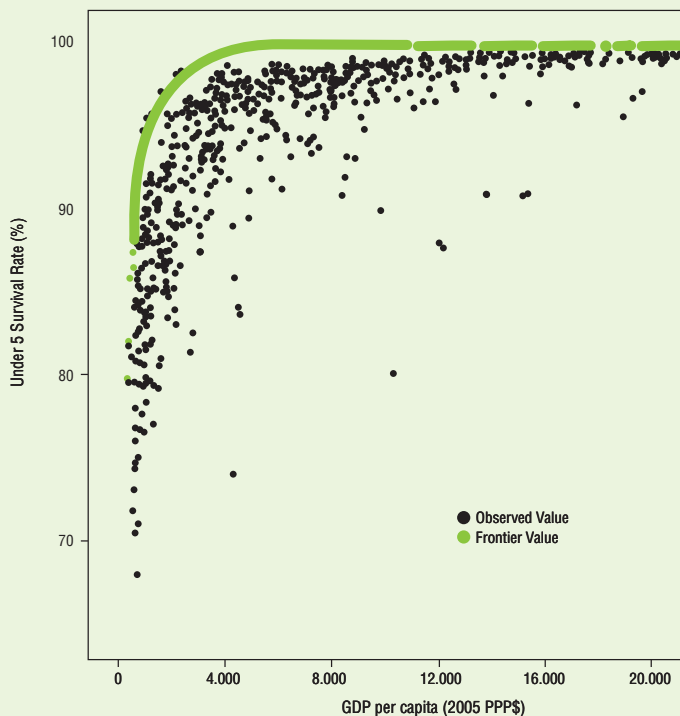
The ICESCR commits countries to devote "the maximum of available resources" to enhancing the enjoyment of economic and social rights. A key question is whether countries that honor this commitment do so at the expense of generating additional resources that could enable even greater enjoyment of economic and social rights in the future. A recent application of the SERF methodology,

8 The results presented here are for the most recent version of the dataset (International SERF Index Dataset Version 2011.1 available at <[www.serfindex.org/data](http://www.serfindex.org/data)>). This version reflects several refinements over the version reported on in Randolph, Fukuda-Parrr, and Lawson-Remer, "Economic and Social Rights Fulfillment Index: Country Scores and Rankings," *Journal of Human Rights*, 9: 230-61, (2010).

## THE ACHIEVEMENT POSSIBILITY FRONTIER: CHILD SURVIVAL EXAMPLE

The level of State obligation is determined by constructing an Achievement Possibilities Frontier that identifies the highest level of enjoyment observed by any country at each per capita income level. The Achievement Possibilities Frontier is identified by first constructing a scatter plotting the value of the indicator concerned observed in each country against its per capita GDP income at the time (adjusted for inflation and differences in purchasing power by using 2005 PPP\$) and then using statistical techniques to fit a curve to the boundary observations. The Achievement Possibilities Frontier for the Child (Under 5) Survival Rate is shown below. Each black dot is an observation from a particular country for a particular year between 1990 and 2008. The green curve is the resultant Achievement Possibilities Frontier for the Under 5 Survival Rate. A country's level of obligation is specified as the under 5 survival rate corresponding to the country's per capita GDP level.

Frontier: Under 5 Survival =  $100.895 - 7334.1/\text{GDP Per Capita}$   
Maximum Constrained to 99.74%



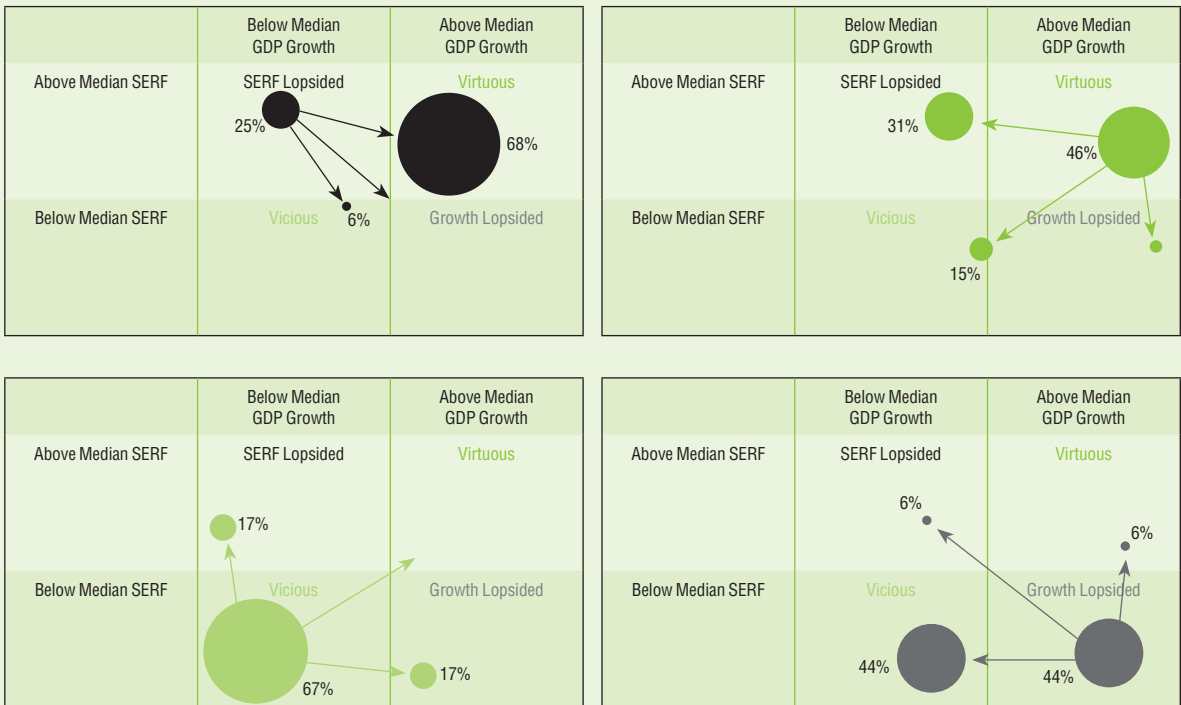
the *Historical International SERF Index* sheds light on this question (forthcoming at [www.serfindex.org/data](http://www.serfindex.org/data)). In addition, it also identifies those countries where rights enjoyment in relation to resource capacity is growing over time signifying improved compliance with their obligations under the ICESCR as well as those countries in violation of the principle of non-retrogression.

In general, country compliance with their obligations of results is improving; the cross-country average value of the Core Historical International SERF Index increased from 60% to 75% between 1975 and 2005. Progress was most robust with regard to the right to education with the mean score on the historical education index increasing from 35% to 72% over the 40 years. Progress was less pronounced, but not negligible for high income OECD

countries. Despite these gains, there is reason for concern. First, progress for the Core countries was most robust between 1975 and 1985; the pace of improvement slowed between 1985 and 1995, and was further dampened between 1995 and 2005. Further, there was wide variation in performance and the principle of non-retrogression is frequently violated over the period of a decade or more. Retrogression occurred in half the countries on some right over one or more periods.

One way to examine the question of whether there is a trade-off between fulfilling economic and social rights obligations today and building resources to enhance economic and social rights enjoyment in the future is to look at country outcomes from one decade to the next. To address this question, we first split the countries for which the Core Historical

## PROMOTING ECONOMIC AND SOCIAL RIGHTS IS GOOD FOR GROWTH



The diagram above tracks where countries that start out in 1995 end up in 2005. Four possible initial and final positions are considered: 1) countries with per capita GDP growth rates and SERF Index scores both below the median of the sample—vicious cell, 2) countries with per capita GDP growth rates and SERF Index scores above the median of the sample—virtuous cell, 3) countries with per capita GDP growth rates above the median but SERF Index scores below the median—growth lopsided, and 4) countries with SERF Index scores above the median, but per capita income

growth rates below the median—SERF lopsided. The bubbles show the percentage of countries that end up in each of the four positions depending on their starting point. As can be seen, countries that prioritize meeting their economic and social rights obligations over growth are the most likely to end up in the virtuous position, whereas countries that prioritize growth in per capita income over meeting the economic and social rights commitments are very unlikely to end up in the virtuous cell and quite likely to fall back to the vicious cell.

International SERF Index could be computed for both the decade of the 1990s and the decade of the 2000s into four groups:

- Countries whose SERF Index score and per capita income growth rate over the decade were below the median values—countries trapped in a vicious cycle.
- Countries whose SERF Index score and per capita income growth rate over the decade were above the median values—countries in a virtuous cycle.
- Countries whose SERF Index score was above the median value but whose per capita income growth rate was below the median value—call them SERF lopsided—.
- Countries whose per capita income growth rate was above the median value but whose SERF Index score was below the median—call them growth lopsided.

Given a country's starting point—vicious cycle, virtuous cycle, SERF lopsided or growth-lopsided—one can then look at where the countries end up in the next decade. Box 2 details the outcome. The findings

from this analysis clearly reveal that growth-lopsided countries seldom converged to the virtuous cycle and in fact were as likely to converge to the vicious cycle as remain in the growth-lopsided category. On the other hand, SERF-lopsided countries were far more likely to converge to the virtuous cycle, and if not, with few exceptions, remain in the SERF-lopsided category. In summary, countries that emphasized meeting their economic and social rights commitments were unlikely to face reduced per capita income growth as a result. Quite the contrary, the results suggest that promoting economic and social rights is good for growth. ■

## Core Country SERF Index

| Country                             | Core Country SERF Index Value | Core Country Right to Food Index Value | Core Country Right to Health Index Value | Core Country Right to Education Index Value | Core Country Right to Housing Index Value | Core Country Right to Work Index Value | Country           | Core Country SERF Index Value | Core Country Right to Food Index Value | Core Country Right to Health Index Value | Core Country Right to Education Index Value | Core Country Right to Housing Index Value | Core Country Right to Work Index Value |
|-------------------------------------|-------------------------------|--|--|---|---|--|-------------------|-------------------------------|--|--|---|---|--|
| <b>Countries with Complete Data</b> |                               |  |  |   |   |  |                   |                               |  |  |   |   |  |
| Uruguay                             | 94.05                         | 79.45                                  | 95.63                                    | 98.98                                       | 100.00                                    | 96.17                                  | Togo              | 76.73                         | 99.75                                  | 70.26                                    | 78.15                                       | 35.50                                     | 100.00                                 |
| Jordan                              | 93.65                         | 96.27                                  | 84.57                                    | 93.76                                       | 95.27                                     | 98.37                                  | Azerbaijan        | 76.38                         | 63.03                                  | 76.95                                    | 91.85                                       | 50.05                                     | 100.00                                 |
| Belarus                             | 93.41                         | 95.79                                  | 85.23                                    | 92.45                                       | 93.56                                     | 100.00                                 | Peru              | 75.89                         | 57.34                                  | 88.72                                    | 96.88                                       | 58.04                                     | 78.46                                  |
| Moldova                             | 92.15                         | 100.00                                 | 88.69                                    | 85.42                                       | 89.83                                     | 96.82                                  | Congo, Dem. Rep.  | 75.49                         | 73.29                                  | 66.70                                    | 92.28                                       | 45.21                                     | 100.00                                 |
| Kyrgyz Republic                     | 92.13                         | 100.00                                 | 80.59                                    | 92.52                                       | 97.48                                     | 90.06                                  | Malawi            | 74.39                         | 31.40                                  | 69.14                                    | 77.11                                       | 94.31                                     | 100.00                                 |
| Cuba                                | 92.07                         | 98.16                                  | 97.15                                    | 87.72                                       | 87.98                                     | 89.32                                  | Burundi           | 73.85                         | 19.41                                  | 59.95                                    | 93.50                                       | 96.37                                     | 100.00                                 |
| Ukraine                             | 90.69                         | 76.61                                  | 83.00                                    | 98.62                                       | 95.24                                     | 100.00                                 | Timor-Leste       | 73.24                         | 24.23                                  | 70.03                                    | 91.31                                       | 80.64                                     | 100.00                                 |
| Chile                               | 90.59                         | 100.00                                 | 87.60                                    | 86.64                                       | 79.43                                     | 99.30                                  | Bolivia           | 72.17                         | 59.40                                  | 78.45                                    | 95.78                                       | 47.51                                     | 79.74                                  |
| Serbia                              | 90.35                         | 89.48                                  | 78.83                                    | 90.96                                       | 92.48                                     | 100.00                                 | Ghana             | 71.95                         | 86.59                                  | 60.01                                    | 78.67                                       | 52.25                                     | 82.22                                  |
| Jamaica                             | 89.84                         | 98.57                                  | 86.03                                    | 86.70                                       | 83.19                                     | 94.73                                  | Kenya             | 71.57                         | 67.65                                  | 56.31                                    | 84.98                                       | 51.09                                     | 97.81                                  |
| Guyana                              | 89.25                         | 91.02                                  | 68.95                                    | 98.24                                       | 94.68                                     | 93.33                                  | Rwanda            | 68.83                         | 33.71                                  | 59.07                                    | 72.49                                       | 78.90                                     | 100.00                                 |
| Bulgaria                            | 88.52                         | 88.49                                  | 78.02                                    | 76.62                                       | 100.00                                    | 99.48                                  | Nepal             | 67.91                         | 37.96                                  | 86.58                                    | 79.01                                       | 72.99                                     | 63.02                                  |
| Argentina                           | 88.34                         | 88.33                                  | 87.31                                    | 97.78                                       | 77.58                                     | 90.69                                  | Comoros           | 66.88                         | 35.41                                  | 68.66                                    | 81.02                                       | 76.25                                     | 73.05                                  |
| Brazil                              | 87.42                         | 91.11                                  | 90.08                                    | 96.47                                       | 75.81                                     | 83.61                                  | Guatemala         | 65.83                         | 17.78                                  | 76.11                                    | 72.31                                       | 86.60                                     | 76.38                                  |
| Georgia                             | 86.62                         | 92.35                                  | 80.15                                    | 92.41                                       | 96.86                                     | 71.31                                  | Indonesia         | 65.71                         | 45.01                                  | 85.16                                    | 93.43                                       | 63.88                                     | 41.09                                  |
| Kazakhstan                          | 86.60                         | 72.77                                  | 70.51                                    | 98.42                                       | 91.31                                     | 100.00                                 | Bangladesh        | 64.18                         | 50.90                                  | 87.27                                    | 58.28                                       | 83.42                                     | 41.05                                  |
| Tunisia                             | 86.11                         | 91.11                                  | 86.84                                    | 84.04                                       | 81.58                                     | 86.97                                  | Senegal           | 63.31                         | 98.91                                  | 47.96                                    | 52.41                                       | 62.60                                     | 54.68                                  |
| Malaysia                            | 85.15                         | 75.93                                  | 84.08                                    | 80.04                                       | 95.71                                     | 90.00                                  | Sierra Leone      | 61.46                         | 49.90                                  | 30.20                                    | 100.00                                      | 27.20                                     | 100.00                                 |
| Thailand                            | 85.14                         | 79.38                                  | 88.09                                    | 74.52                                       | 96.20                                     | 87.51                                  | Mozambique        | 61.33                         | 50.98                                  | 46.94                                    | 76.79                                       | 31.94                                     | 100.00                                 |
| Armenia                             | 84.98                         | 83.58                                  | 83.14                                    | 89.34                                       | 91.17                                     | 77.65                                  | Mauritania        | 60.94                         | 76.86                                  | 46.81                                    | 59.63                                       | 42.84                                     | 78.57                                  |
| Russia                              | 84.82                         | 76.18                                  | 82.24                                    | 85.49                                       | 80.18                                     | 100.00                                 | Lesotho           | 60.58                         | 45.20                                  | 49.44                                    | 73.07                                       | 66.53                                     | 68.65                                  |
| Albania                             | 84.76                         | 62.33                                  | 89.58                                    | 81.80                                       | 97.60                                     | 92.48                                  | Botswana          | 60.36                         | 52.64                                  | 59.63                                    | 86.67                                       | 63.08                                     | 39.79                                  |
| Iran                                | 84.74                         | 72.35                                  | 89.82                                    | 91.03                                       | 79.94                                     | 90.56                                  | Guinea-Bissau     | 60.15                         | 52.51                                  | 44.91                                    | 49.81                                       | 53.53                                     | 100.00                                 |
| Mexico                              | 84.37                         | 72.78                                  | 90.02                                    | 92.66                                       | 77.98                                     | 88.43                                  | Cambodia          | 59.87                         | 53.71                                  | 66.85                                    | 73.14                                       | 49.96                                     | 55.69                                  |
| Turkey                              | 84.24                         | 75.29                                  | 88.80                                    | 78.96                                       | 88.96                                     | 89.20                                  | Bhutan            | 59.78                         | 32.70                                  | 65.16                                    | 71.16                                       | 77.30                                     | 52.59                                  |
| Romania                             | 83.98                         | 82.57                                  | 88.43                                    | 88.54                                       | 63.85                                     | 96.52                                  | Namibia           | 58.71                         | 58.52                                  | 70.52                                    | 70.22                                       | 57.26                                     | 37.02                                  |
| Dominican Republic                  | 83.85                         | 88.15                                  | 86.59                                    | 78.50                                       | 80.13                                     | 85.87                                  | Ethiopia          | 58.10                         | 39.21                                  | 58.08                                    | 67.36                                       | 25.85                                     | 100.00                                 |
| Sri Lanka                           | 83.81                         | 85.61                                  | 91.14                                    | 88.29                                       | 91.05                                     | 62.97                                  | Cameroon          | 56.92                         | 59.19                                  | 47.31                                    | 67.97                                       | 57.13                                     | 53.02                                  |
| Paraguay                            | 83.78                         | 83.82                                  | 92.97                                    | 86.56                                       | 68.59                                     | 86.99                                  | Pakistan          | 56.73                         | 48.55                                  | 65.94                                    | 49.06                                       | 74.09                                     | 46.02                                  |
| Macedonia                           | 83.54                         | 82.92                                  | 68.08                                    | 80.10                                       | 91.45                                     | 95.18                                  | Zambia            | 56.71                         | 44.18                                  | 46.98                                    | 91.94                                       | 61.46                                     | 39.00                                  |
| Ecuador                             | 83.51                         | 58.51                                  | 90.56                                    | 95.13                                       | 88.10                                     | 85.24                                  | India             | 56.06                         | 32.70                                  | 74.74                                    | 82.64                                       | 62.55                                     | 27.67                                  |
| Liberia                             | 83.13                         | 90.10                                  | 73.17                                    | 99.08                                       | 53.29                                     | 100.00                                 | Cote d'Ivoire     | 55.76                         | 54.52                                  | 51.14                                    | 46.03                                       | 54.45                                     | 72.65                                  |
| Algeria                             | 82.67                         | 79.77                                  | 83.78                                    | 90.41                                       | 85.48                                     | 73.91                                  | Djibouti          | 55.59                         | 54.52                                  | 52.37                                    | 31.72                                       | 63.01                                     | 76.33                                  |
| Gambia                              | 81.65                         | 88.99                                  | 53.44                                    | 75.22                                       | 96.71                                     | 93.88                                  | Lao PDR           | 55.07                         | 36.16                                  | 72.44                                    | 70.40                                       | 61.14                                     | 35.22                                  |
| Belize                              | 81.60                         | 70.05                                  | 77.22                                    | 90.74                                       | 93.82                                     | 76.18                                  | Mali              | 53.70                         | 65.09                                  | 32.75                                    | 62.11                                       | 53.01                                     | 55.57                                  |
| Nicaragua                           | 81.55                         | 93.29                                  | 94.09                                    | 76.23                                       | 67.04                                     | 77.09                                  | Guinea            | 53.52                         | 64.18                                  | 52.26                                    | 63.10                                       | 51.53                                     | 36.53                                  |
| Egypt                               | 81.41                         | 58.37                                  | 84.92                                    | 84.88                                       | 96.64                                     | 82.25                                  | Benin             | 52.50                         | 45.81                                  | 58.51                                    | 68.76                                       | 48.59                                     | 40.81                                  |
| Venezuela                           | 80.55                         | 74.91                                  | 90.96                                    | 89.61                                       | 60.95                                     | 86.32                                  | Yemen             | 51.84                         | 13.29                                  | 63.89                                    | 57.91                                       | 62.31                                     | 61.81                                  |
| El Salvador                         | 80.04                         | 67.94                                  | 87.64                                    | 78.86                                       | 80.05                                     | 85.71                                  | Niger             | 51.14                         | 27.56                                  | 48.10                                    | 47.06                                       | 32.99                                     | 100.00                                 |
| Tajikistan                          | 79.91                         | 71.17                                  | 73.86                                    | 93.60                                       | 84.65                                     | 76.25                                  | Swaziland         | 50.54                         | 61.76                                  | 50.69                                    | 63.89                                       | 57.81                                     | 18.56                                  |
| China                               | 79.73                         | 90.43                                  | 94.82                                    | 83.58                                       | 65.83                                     | 63.98                                  | Gabon             | 50.03                         | 52.30                                  | 54.07                                    | 54.06                                       | 20.29                                     | 69.44                                  |
| Colombia                            | 79.54                         | 78.23                                  | 91.74                                    | 95.19                                       | 67.64                                     | 64.92                                  | Congo, Rep.       | 48.35                         | 61.86                                  | 53.70                                    | 66.61                                       | 33.27                                     | 26.31                                  |
| Vietnam                             | 78.79                         | 58.39                                  | 98.59                                    | 85.80                                       | 92.52                                     | 58.66                                  | Madagascar        | 47.87                         | 29.91                                  | 66.44                                    | 81.89                                       | 25.98                                     | 35.14                                  |
| Uzbekistan                          | 78.60                         | 93.59                                  | 85.79                                    | 89.14                                       | 94.36                                     | 30.12                                  | Tanzania          | 47.70                         | 49.33                                  | 57.12                                    | 76.75                                       | 43.73                                     | 11.60                                  |
| Trinidad and Tobago                 | 78.56                         | 92.96                                  | 68.18                                    | 66.58                                       | 84.06                                     | 81.05                                  | Burkina Faso      | 46.77                         | 49.13                                  | 45.12                                    | 41.36                                       | 51.44                                     | 46.80                                  |
| Mongolia                            | 77.79                         | 73.34                                  | 81.47                                    | 92.20                                       | 52.46                                     | 89.46                                  | Nigeria           | 42.51                         | 47.70                                  | 33.35                                    | 66.71                                       | 43.29                                     | 21.50                                  |
| Philippines                         | 77.53                         | 69.17                                  | 83.36                                    | 90.79                                       | 86.60                                     | 57.70                                  | Chad              | 39.79                         | 46.94                                  | 30.12                                    | 38.53                                       | 32.39                                     | 50.95                                  |
| Suriname                            | 77.42                         | 86.89                                  | 74.24                                    | 74.87                                       | 80.03                                     | 71.07                                  | Angola            | 34.75                         | 26.61                                  | 23.51                                    | 45.78                                       | 45.30                                     | 32.57                                  |
| Morocco                             | 77.33                         | 77.42                                  | 87.12                                    | 68.34                                       | 65.93                                     | 87.85                                  | Equatorial Guinea | 20.22                         | 26.99                                  | 23.12                                    | 28.89                                       | 18.66                                     | 3.41                                   |
| Honduras                            | 76.98                         | 64.62                                  | 88.04                                    | 82.90                                       | 76.96                                     | 72.39                                  |                   |                               |  |  |   |   |  |

## Core Country SERF Index

| Country                               | Core Country SERF Index Value | Core Country Right to Food Index Value | Core Country Right to Health Index Value | Core Country Right to Education Index Value | Core Country Right to Housing Index Value | Core Country Right to Work Index Value | Country                   | Core Country SERF Index Value | Core Country Right to Food Index Value | Core Country Right to Health Index Value | Core Country Right to Education Index Value | Core Country Right to Housing Index Value | Core Country Right to Work Index Value |
|---------------------------------------|-------------------------------|--|--|---|---|--|---------------------------|-------------------------------|--|--|---|---|--|
| <b>Countries with Incomplete Data</b> |                               |  |  |   |   |  |                           |                               |  |  |   |   |  |
| Aruba                                 |                               |  |  |   |   |  | Lithuania                 |                               | 77.30                                  | 83.25                                    |   |   | 100.00                                 |
| Andorra                               |                               |  |  |   |   |  | Latvia                    |                               | 78.46                                  | 86.60                                    | 77.48                                       |   | 100.00                                 |
| Afghanistan                           |                               | 13.13                                  | 24.32                                    | 59.10                                       | 51.13                                     |  | Macao SAR, China          |                               |  | 86.93                                    |   |   |  |
| Anguilla                              |                               |  |  |   |   |  | Monaco                    |                               |  |  |   |   |  |
| Netherlands Antilles                  |                               |  |  |   |   |  | Maldives                  | 61.48                         | 76.29                                  | 89.26                                    | 92.68                                       |   |  |
| United Arab Emirates                  |                               | 41.18                                  | 74.10                                    | 78.40                                       | 94.68                                     |  | Marshall Islands          |                               |  |  |   |   |  |
| American Samoa                        |                               |  |  |   |   |  | Malta                     |                               |  | 85.92                                    | 100.00                                      |   |  |
| Antigua and Barbuda                   |                               |  |  |   | 86.64                                     |  | Myanmar                   |                               |  |  |   |   |  |
| Bahrain                               |                               | 71.16                                  | 86.45                                    | 86.38                                       |   |  | Montenegro                | 89.81                         | 77.79                                  |  | 91.06                                       | 100.00                                    |  |
| Bahamas                               |                               |  |  | 82.33                                       |   |  | Northern Mariana Islands  |                               |  |  |   |   |  |
| Bosnia and Herzegovina                |                               | 86.58                                  |  |   | 95.50                                     | 100.00                                 | Montserrat                |                               |  |  |   |   |  |
| Bermuda                               |                               |  |  |   |   |  | Mauritius                 | 82.33                         | 88.49                                  | 75.94                                    | 91.93                                       |   |  |
| Barbados                              |                               |  |  |   | 100.00                                    |  | Mayotte                   |                               |  |  |   |   |  |
| Brunei Darussalam                     |                               |  |  | 85.58                                       |   |  | Nauru                     |                               |  |  |   |   |  |
| British Virgin Islands                |                               |  |  |   |   |  | New Caledonia             |                               |  |  |   |   |  |
| Central African Republic              |                               | 59.75                                  |  | 50.38                                       | 61.01                                     | 100.00                                 | Niue                      |                               |  |  |   |   |  |
| Channel Islands                       |                               |  |  |   |   |  | Oman                      | 75.00                         | 75.08                                  | 51.64                                    | 68.53                                       |   |  |
| Cook Islands                          |                               |  |  |   |   |  | Panama                    | 68.98                         |  | 92.55                                    | 65.26                                       | 75.40                                     |  |
| Cape Verde                            |                               |  | 87.70                                    | 85.28                                       | 72.20                                     | 67.70                                  | Palau                     |                               |  |  |   |   |  |
| Costa Rica                            |                               |  | 97.77                                    | 79.06                                       | 90.39                                     | 96.27                                  | Papua New Guinea          | 43.73                         | 62.19                                  |  | 45.78                                       | 47.88                                     |  |
| Cayman Islands                        |                               |  |  |   |   |  | Puerto Rico               |                               |  |  |   |   |  |
| Cyprus                                |                               |  |  | 90.47                                       | 100.00                                    |  | Korea, Dem. Rep.          |                               |  |  |   |   |  |
| Dominica                              |                               |  |  | 70.01                                       | 84.45                                     |  | French Polynesia          |                               |  |  |   |   |  |
| Eritrea                               |                               | 57.65                                  | 60.70                                    | 56.31                                       | 49.50                                     |  | Qatar                     |                               |  | 77.19                                    | 100.00                                      |   |  |
| Estonia                               |                               |  | 88.27                                    | 95.56                                       | 92.19                                     | 100.00                                 | Saudi Arabia              | 81.34                         | 71.14                                  | 80.47                                    | 70.75                                       |   |  |
| French Guiana                         |                               |  |  |   |   |  | Sudan                     | 57.68                         | 47.83                                  | 43.43                                    | 50.03                                       |   |  |
| Fiji                                  |                               |  | 75.83                                    | 81.99                                       | 61.34                                     |  | Singapore                 | 91.79                         | 91.34                                  |  | 100.00                                      |   |  |
| Faeroe Islands                        |                               |  |  |   |   |  | Solomon Islands           |                               | 69.74                                  | 57.65                                    | 55.25                                       |   |  |
| Micronesia                            |                               |  |  |   | 63.62                                     |  | San Marino                |                               |  |  |   |   |  |
| Guadeloupe                            |                               |  |  |   |   |  | Somalia                   |                               |  |  |   |   |  |
| Gibraltar                             |                               |  |  |   |   |  | Sao Tome and Principe     | 83.73                         |  | 79.02                                    | 66.87                                       | 85.85                                     |  |
| Grenada                               |                               |  | 85.42                                    | 92.01                                       | 94.18                                     |  | Slovenia                  |                               | 94.60                                  | 88.11                                    | 98.98                                       | 100.00                                    |  |
| Greenland                             |                               |  |  |   |   |  | Seychelles                |                               |  | 95.82                                    |   | 100.00                                    |  |
| Guam                                  |                               |  |  |   |   |  | Syria                     | 64.74                         | 88.80                                  | 88.31                                    | 91.53                                       |   |  |
| Hong Kong SAR, China                  |                               |  |  | 85.21                                       |   |  | Turks and Caicos Islands  |                               |  |  |   |   |  |
| Croatia                               |                               |  | 91.27                                    | 90.84                                       | 96.54                                     | 100.00                                 | Turkmenistan              | 80.65                         | 70.43                                  |  |   | 66.27                                     |  |
| Haiti                                 |                               | 87.31                                  | 72.41                                    |   | 45.91                                     | 58.02                                  | Tokelau                   |                               |  |  |   |   |  |
| Isle of Man                           |                               |  |  |   |   |  | Tonga                     |                               | 70.88                                  | 97.54                                    | 97.97                                       |   |  |
| Iraq                                  |                               | 71.13                                  |  | 68.31                                       | 68.30                                     |  | Tuvalu                    |                               |  |  |   |   |  |
| Israel                                |                               |  |  | 92.99                                       | 100.00                                    |  | Uganda                    | 65.45                         | 50.02                                  |  | 73.77                                       | 77.60                                     |  |
| Kiribati                              |                               |  |  | 96.39                                       | 48.71                                     |  | St. Vincent and the Gren. |                               |  | 93.68                                    |   |   |  |
| St. Kitts and Nevis                   |                               |  |  | 88.25                                       | 95.51                                     |  | Virgin Islands (U.S.)     |                               |  |  |   |   |  |
| Kosovo                                |                               |  |  |   |   |  | Vanuatu                   |                               | 75.60                                  | 68.85                                    | 67.23                                       |   |  |
| Kuwait                                |                               | 30.29                                  |  | 76.46                                       |   |  | West Bank and Gaza        |                               |  |  |   |   |  |
| Lebanon                               |                               | 74.47                                  | 83.87                                    | 73.89                                       | 98.46                                     |  | Wallis et Futuna          |                               |  |  |   |   |  |
| Libya                                 |                               | 60.51                                  |  |   | 76.45                                     |  | Samoa                     |                               | 77.58                                  | 92.77                                    | 95.45                                       |   |  |
| St. Lucia                             |                               |  | 79.72                                    | 86.75                                       | 91.00                                     | 49.06                                  | South Africa              |                               | 57.58                                  | 71.39                                    | 70.22                                       | 46.60                                     |  |
| Liechtenstein                         |                               |  |  | 88.39                                       |   |  | Zimbabwe                  |                               |  | 97.62                                    |   |   |  |

## SERF Index for High Income OECD Countries

| Country                               | OECD High Income Country Right to Food Index Value | OECD High Income Country Right to Health Index Value | OECD High Income Country Right to Education Index Value | OECD High Income Country Right to Work Index Value | OECD High Income Country SERF Index Value |
|---------------------------------------|--|--|---|--|---|
| <b>Countries with Complete Data</b>   |  |  |   |  |   |
| Finland                               | 99.75  | 98.43  | 100.00  | 80.38  | 94.64                                     |
| Sweden                                | 100.00   | 99.85  | 82.66   | 88.49  | 92.75                                     |
| Korea, Rep.                           | 99.56  | 97.76  | 95.65   | 76.22  | 92.30                                     |
| Norway                                | 97.84  | 99.61  | 79.28   | 89.28  | 91.50                                     |
| Denmark                               | 97.13  | 96.30  | 87.53   | 84.86  | 91.46                                     |
| Canada                                | 95.26  | 98.04  | 90.59   | 73.53  | 89.36                                     |
| Netherlands                           | 96.78  | 98.76  | 92.07   | 67.71  | 88.83                                     |
| Australia                             | 94.41  | 99.05  | 92.23   | 68.31  | 88.50                                     |
| Poland                                | 96.06  | 92.79  | 90.94   | 67.21  | 86.75                                     |
| Austria                               | 92.48  | 98.55  | 82.52   | 72.29  | 86.46                                     |
| France                                | 93.73  | 98.90  | 83.09   | 62.05  | 84.44                                     |
| Czech Republic                        | 93.98  | 95.77  | 84.51   | 62.52  | 84.19                                     |
| Switzerland                           | 93.19  | 99.23  | 82.46   | 60.18  | 83.77                                     |
| Spain                                 | 92.95  | 99.30  | 83.61   | 57.88  | 83.43                                     |
| Hungary                               | 92.30  | 89.89  | 87.67   | 61.20  | 82.76                                     |
| United Kingdom                        | 91.81  | 97.45  | 81.44   | 59.65  | 82.59                                     |
| Ireland                               | 98.03  | 98.72  | 86.71   | 43.99  | 81.86                                     |
| Japan                                 | 86.80  | 99.72  | 86.46   | 53.94  | 81.73                                     |
| Belgium                               | 91.04  | 98.12  | 86.93   | 48.36  | 81.11                                     |
| United States                         | 88.58  | 94.44  | 75.81   | 57.55  | 79.09                                     |
| Slovakia                              | 94.19  | 91.83  | 81.30   | 48.44  | 78.94                                     |
| Italy                                 | 93.87  | 99.50  | 76.04   | 43.44  | 78.21                                     |
| Greece                                | 89.24  | 99.35  | 80.77   | 42.61  | 77.99                                     |
| Luxembourg                            | 97.51  | 98.27  | 58.85   | 44.55  | 74.79                                     |
| <b>Countries with Incomplete Data</b> |  |  |   |  |   |
| Germany                               | 93.44  | 98.37  |   | 46.52  |   |
| Iceland                               | 100.00   | 99.85  | 83.70   |  |   |
| New Zealand                           | 96.42  | 98.15  | 93.77   |  |   |
| Portugal                              | 93.31  | 98.01  | 79.58   |  |   |